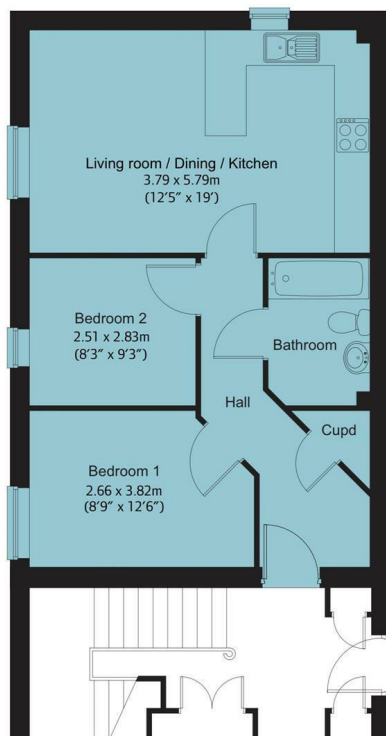




17 Kentwell Road, Peterborough, PE7 8RD
£1,000 Per month





- 2 bedrooms
- Modern ground floor apartment
- EPC: B
- 2 allocated parking spaces

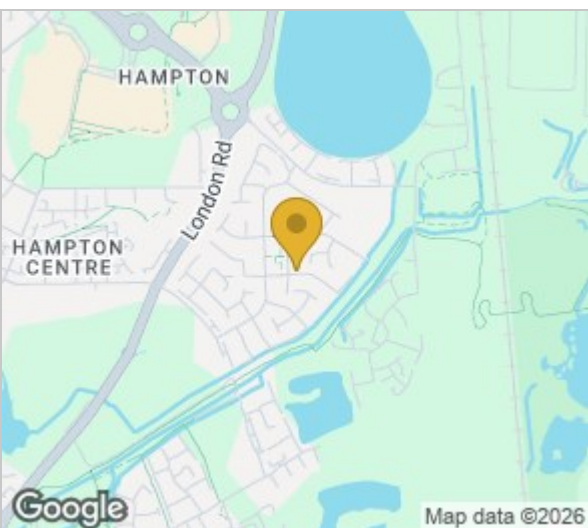
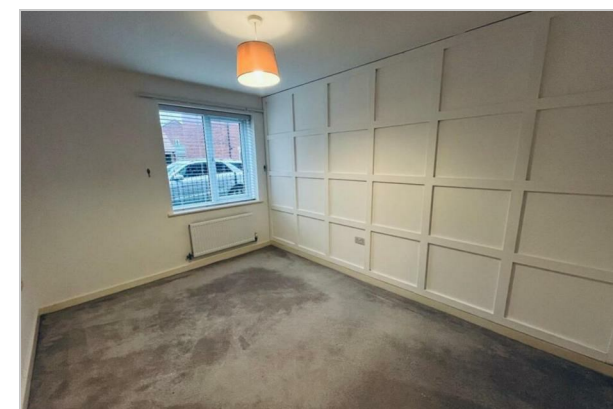
A modern ground floor 2 bedroom apartment located in the popular location of Hampton Garden, with the added benefit of two allocated parking spaces.

The apartment has an open plan kitchen/lounge/dining room. The kitchen is well equipped with a range of low and high level cabinets, a gas hob and an electric single oven. There is a freestanding fridge freezer and washing machine. There is plenty of worktop space with a breakfast offering a definition of space between the kitchen and the lounge area.

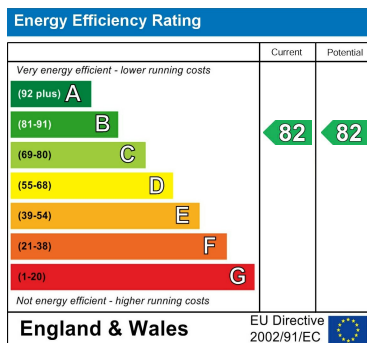
The family bathroom has a modern feel with a bath with a shower over, a WC and basin with vanity unit. There is a heated towel rail, modern grey tiling and vinyl flooring.

Both bedrooms are doubles and carpeted. The property is available now and comes unfurnished.

*Please note the floorplan is a mirror image of the one provided in the advert.



Energy Efficiency Rating		
	Current	Potential
Very energy efficient - lower running costs		
(92 plus) A		
(81-91) B		
(69-80) C		
(55-68) D		
(39-54) E		
(21-38) F		
(1-20) G		
Not energy efficient - higher running costs		
England & Wales	EU Directive 2002/91/EC	



These particulars, whilst believed to be accurate are set out as a general outline only for guidance and do not constitute any part of an offer or contract. Intending purchasers should not rely on them as statements of representation of fact, but must satisfy themselves by inspection or otherwise as to their accuracy. No person in this firm's employment has the authority to make or give any representation or warranty in respect of the property.

Cambridge Victoria: 154-156 Victoria Road, Cambridge, CB4 3DZ
01223 439 888 theteam@grayandtoynbee.com

Cambridge South: Adkins Corner, Perne Road, Cambridge CB1 3RU
01223 439 555 theteam@grayandtoynbee.com

Waterbeach: 17 High Street, Waterbeach, CB25 9JU
01223 949 444 waterbeach@grayandtoynbee.com